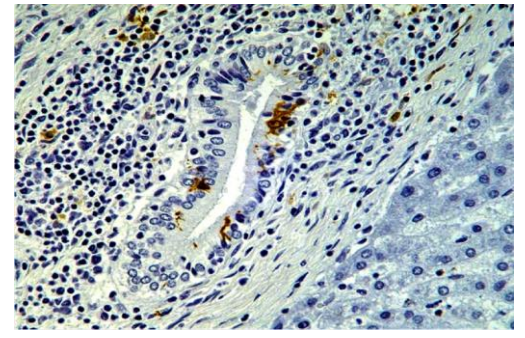
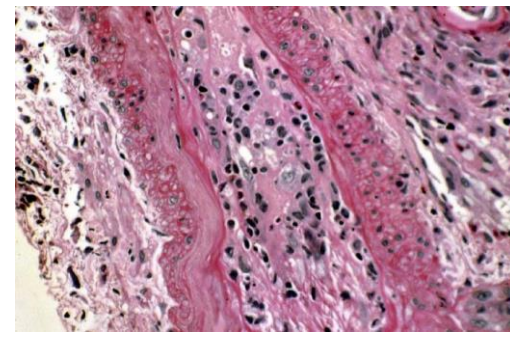
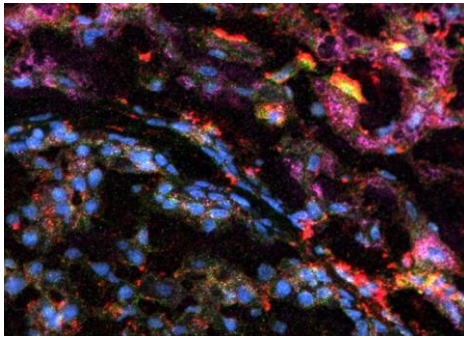




F E L L O W S H I P

Transplantation and Hepatic Pathology

UPMC
LIFECHANGINGMEDICINE



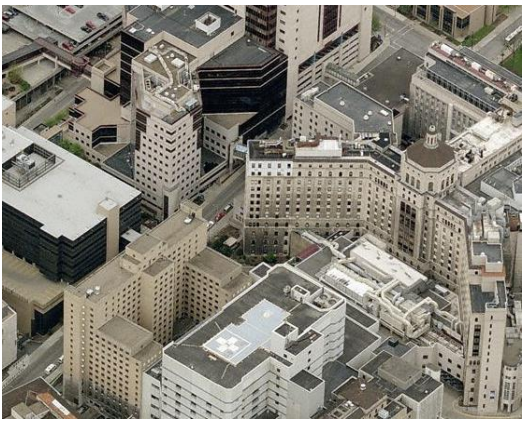
One Fellowship Opening for 2021-2022

8 reasons to train at UPMC for Transplantation and Hepatic Pathology

1. We are strongly devoted to teaching transplantation and hepatic pathology with additional exposure to native kidney pathology. We hold multiple NIH-funded grants and are available one-on-one to train you from both a clinical and a research perspective.
2. In addition to exposure to liver, kidney, heart, intestine, pancreas and lung transplant pathology, there is significant exposure to native liver pathology, including neoplastic disease. You will also have exposure to native kidney pathology. In addition, we maintain a state of the art HLA laboratory and the option to train in this area is also offered.
3. We strive to tailor the fellowship to the goals of the fellow while maintaining our focus on producing excellent transplant pathologists who will continue to move the field forward. You will have the undivided attention of 5 experienced pathologists and flexibility in creating a curriculum that meets your needs.
4. As members of the Thomas E. Starzl Transplantation Institute, we work closely with surgeons and clinicians both in research and clinical practice and you will gain practical exposure to these daily interactions.
5. Our faculty routinely present at national and international meetings as invited speakers or to present original research. Organ transplantation in Pittsburgh has a distinguished history and we have been privileged to have been participants, several of us since the very beginning. We have not learned transplantation pathology from books, in many cases we "wrote the book". You will benefit from that experience.
6. The Division has established and maintains a national and international telepathology consultation service and you will develop skill in performing this ever more standard way of rendering diagnoses.
7. Research opportunities exist not only within the Division but also with collaborations with the University of Pittsburgh Cancer Center, Carnegie Mellon University including the Robotics Center, and the McGowan Regenerative Medicine Institute, among others.
8. We offer an ACGME accredited fellowship that provides personal attention and will give you skills that will enhance your general pathology training and provide you with abilities that few people have. All previous fellows have successfully obtained positions in their areas of interest, often prior to completion of their time with us.

Division of Hepatic and Transplantation Pathology
UPMC Montefiore Hospital, Room E-733
3453 Fifth Avenue
Pittsburgh, PA 15213

Michael A. Nalesnik, MD
Fellowship Program Director
Phone: 412-647-7645
E-mail: nalesnikma@upmc.edu



F E L L O W S H I P

Transplantation and Hepatic Pathology

P R O G R A M S P E C I F I C S

Number of approved positions	1 per year
Program length	1 year
Type of program	Large academic, fully ACGME-accredited
Funds for books, dues and travel	\$1750 plus Department sponsored conference

F A C U L T Y

Anthony J. Demetris, MD	Parmjeet S Randhawa, MD
Mohamed El Hag, MD	Adrianna Zeevi, PhD
Marta I Minervini, MD	
Michael A Nalesnik, MD	

S C H E D U L E

Rotation	Time
Clinical	8 months
Research/Elective	3 months
Vacation	1 month

Electives to date have included Medical Renal Pathology, GI Pathology, Pulmonary Pathology, Pediatric Pathology, HLA Laboratory; Additional options exist for specific interests; Flexibility also exists in regard to concurrent efforts

C O N T A C T S

Dr. Michael A. Nalesnik (nalesnikma@upmc.edu)
Fellowship Program Director,
Hepatic and Transplantation Pathology

Dr. Anthony J. Demetris (demetrisaj@upmc.edu)
Division Director,
Hepatic and Transplantation Pathology

Ms. Selene Douglass (douglassr@upmc.edu)
Program Coordinator
412-647-7645

A C A D E M I C S

Total Research Funding (annual)	\$1,869,668
International Podium Presentations	20+
Publications (Including invited reviews and book chapters)	45+

O N L I N E

Online Fellowship application form
<https://epssecure.upmc.com/path/fellowship/app-form.cfm>

UPMC Pathology Home
<https://path.upmc.edu/>

Transplant Division Website
<https://tpis.upmc.com/>

O N L I N E A P P L I C A T I O N F O R M

<https://epssecure.upmc.com/path/fellowship/app-form.cfm>